
Benefice of Stanley, South Moor and Tanfield Parish Profile 2025



St Andrew's Church

Stanley & South Moor Parish



St Margaret's Church

Tanfield Parish

*“Sharing God's Love,
Growing Together,
Embracing Community”*

Welcome!

Welcome from the Church Wardens and PCCs of the Benefice



A warm welcome and thank you for taking the time to read our parish profile. We hope that this information will help you to decide if God is calling you in ministry to lead the Benefice of Stanley, South Moor and Tanfield and help us to grow.

This is a unique opportunity to fulfil your calling by sharing God's forgiveness, Christ's love and the Spirit's strength with the whole Benefice. Waiting for you is a committed and willing team offering their prayers, time and gifts to enable this to take place.

It is with a sense of excited anticipation and an open mind we approach our search for a new Vicar who will help us lift our presence and impact, building faith, care, and community strength, enjoying living and ministering in a combination of semi-urban and rural settings.

As you look through these pages, we hope that you will gain a flavour of our life here in the Benefice and will want to join us at St Andrew's and St Margaret's as we set out on a new adventure as a united Benefice.

Come and see what we can do together!

Our Vision

To fulfil God's purpose by actively showing his love to work throughout our community and to bring in new people to discover that love. We aim to do this by promoting and enabling spiritual worship, nurture, and evangelism and by understanding and meeting the social and community needs of the two parishes which make up 'The Benefice of Stanley, South Moor and Tanfield'.

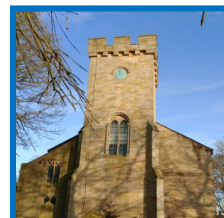
Who we are



We are welcoming parishes with distinct personalities, as you will see in our individual profiles. We are a recently formed Benefice following a Deanery reorganisation in late 2024, made up of two beautiful well-maintained churches, St Andrew's in the town of Stanley in County Durham and St Margaret's in Tanfield Village on the outskirts of Stanley.

We are working together to meet our individual and joint aims and challenges. The PCC's of each church have met to

introduce ourselves and to start working together as a united benefice, making key decisions and to further God's work in our area.



Church	Electoral role	Usual Sunday attendance	Population size
St. Andrew's Stanley	85	35	21,115
Tanfield	50	21	4,186

(Figures from Lanchester Deanery Plan 2024-2029)

Stanley is a large town encompassing South Moor and Craghead, in the Northwest of County Durham. It is located in a semi-rural setting midway between the cities of Newcastle and Durham.

The majority of settlements in the area are former pit villages, a legacy of the significant mining industry in this region. The decline and closure of the mines had a significant impact on the local economy, once heavily reliant on mining.

There is a wide variety of socioeconomic groups in the parishes ranging from private housing to social housing estates and everything in between. The mix includes working families, unemployed, single parents and retired people.

The largest employment sectors are retail, manufacturing, health, and social work. The largest industry groups are construction, professional, scientific and technical services.



Demographics

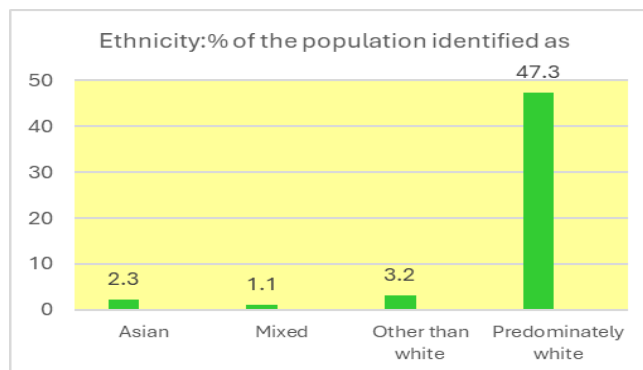
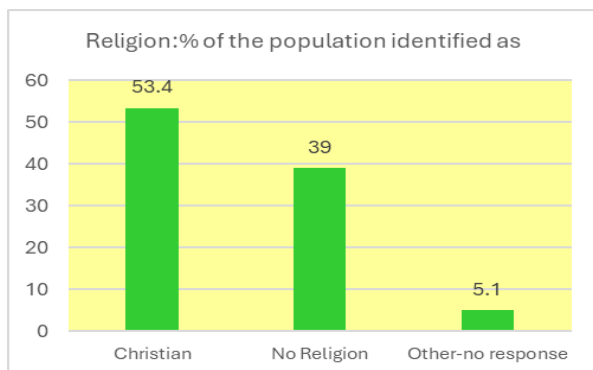
The town of Stanley in County Durham is predominantly urban with a population of 19,427 (2021 census) and its demographics are shaped by its history as a former pit village.

The village of Tanfield is approximately 2 miles from Stanley and the parish is made up of several small rural villages.

The Benefice has a demographic profile that is largely in line with the broader county of Co. Durham which has a population of approx. 522,100, median age 43, 93.6% born in England, 43.7% in good health, 10.4% disabled and 54.6% described as Christian. (ONS website published Jan 2023)

A breakdown of the key demographic statistics for ethnicity and religion in County Durham:

(www.gov.co.uk census 2021)



See more info at (https://citypopulation.de/en/uk/northeastengland/county_durham/E63000153_stanley/) and (<https://www.ons.gov.uk/visualisations/censusareachanges/E06000047/>)

Schools in the Benefice

Junior and infant schools: South Stanley Infant and South Stanley Junior, East Stanley, Greenland, Burnside, Shield Row, Bloemfontein and Tanfield Lea. Stanley also has 2 Catholic schools: St. Joseph's and St Mary's.

Secondary schools: North Durham Academy in Stanley and Tanfield School.

Healthcare and other services in the area

There are nearby GP surgeries in Stanley and the surrounding area and hospitals in Durham, Newcastle and a non-emergency hospital in Shotley Bridge, Consett, Co. Durham. There are many care homes in the surrounding area and Benefice.

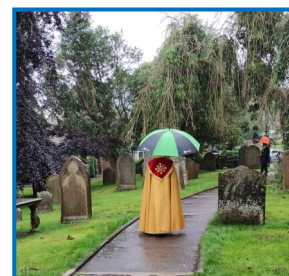
There is a prison in nearby Durham.

The Vicar we seek

We are looking to attract a friendly, outgoing, enthusiastic, nurturing and spiritual Vicar who will spend time getting to know our congregations and all of those who engage with us in our services and events.

Qualities:

- Energy, strong leadership and good communication skills.
- Commitment to pastoral care.
- Commitment to mission growing.
- Inspirational leadership and commitment to developing lay people.
- Ability to lead and develop worship through a variety of traditional, contemporary, and all-age ways with creativity and innovation in order to grow our community.
- To be a visible presence in the community, building relationships with schools, care homes and other community organisations.
- To respond to the changing needs of the church and the community by reaching out to our communities particularly younger people and families.
- Supportive of fundraising initiatives.



- Ability to work collaboratively with the Deanery, PCC and church members to express ideas and vision articulately, and encourage others to do the same.
- Sound safeguarding leadership.

We will offer our new vicar:

- Prayerful support and time for professional development.
- Opportunities to hone existing skills and explore new possibilities.
- The support of our worshipping community.
- Administrative and practical support from an experienced team of PCC members and dedicated volunteers.
- A family home at the Rectory next to St Andrew's Church in Stanley and South Moor Parish. (See appendix 1)

Support we will need from a new vicar:

- New ways to support our local communities and how to better address the issues of economic and social poverty.
- To build on the good links with primary and junior age children and to promote links with secondary school age children and young adults to enable them to discover God's love.
- To encourage more input, giving and help from our present and future congregations to enable the churches to work more effectively in our community.

Opportunities for the new vicar:

- Working within a joint benefice, sharing skills and supporting each other to help shape and grow the benefice in its early years, reaching out into our community in a meaningful way.
- Taking advantage of advisors from our Diocese and any other support available – particularly the possibility of Transformation investment for our United Benefice.
- To further involve children and young people with our work in Caring for God's Creation.
- Developing Intergenerational Worship.

Additional Roles and Support for the new vicar:

- To strengthen community links in this area by becoming involved in the governance of one of our local schools.
- Membership of the Deanery Synod which has the aim of being a forum for "training, sharing, caring, enabling and encouraging" colleagues in the clergy as well as the supporting lay people.
- There are Ecumenical links in the community in the form of Town Carol and Remembrance Day Services, with excellent links with our Town Council.
- As part of the Deanery Plan 2024-2029 there is an opportunity to apply for a transformation bid. This application will need to be submitted by the new vicar with assistance from the deanery and is a key part of the role.



Our Local Area

The Stanley area is semi rural with wonderful opportunities for picnicking, walks, cycling and horse riding. All amenities such as shops, petrol station, restaurants, pubs, takeaways, hairdressers are all easily accessed, and the MetroCentre is only twenty minutes away by car. Within the area there are several Good Ofsted rated schools including two secondary schools. Tanfield Lea has a large industrial estate providing many different employment opportunities.

The Benefice is ideally situated between Newcastle and Durham and counts itself privileged to have Causey Arch (world's oldest surviving single arch railway bridge dated 1725), Tanfield Railway (heritage railway) and Hobson Golf Club within its boundaries, and only five minutes drive from Beamish Open Air Museum (world famous open air museum celebrating local history).

The Benefice's proximity to areas of outstanding beauty, including the North East Coast, Northumberland National Park, County Durham and North Yorkshire, makes it an ideal centre from which to explore - all of these places are within an hours' drive.



Tanfield Railway



Beamish Museum

In addition, the rich and varied cultural life offered by the concert halls and theatres of Newcastle, Gateshead, Sunderland and Durham are within easy reach.

Within 15 minutes the A1 motorway can be reached by car.

Stanley's main form of public transport is buses, covering journeys to the closest major cities Durham, Sunderland and Newcastle allowing connections to trains and metro links, enabling the community to travel about the area without a car.



Durham Cathedral



Newcastle-upon-Tyne

St Andrew's Church

Parish Profile 2025



Church, Mission and Worship

Significant history

St. Andrew's church is a grade two listed building and a major local landmark. Built 1876-77, the tower was added 1931. The architect was J G Holt. At St. Andrew's, the church belfry/campanile contains eleven bells. The significance of church bells is that they are said to be the largest instrument in the world and create a distinctive sound. Our bells are rung on Thursdays and Sunday Eucharist services and on special occasions on request. Of the approximately 40,300 church buildings open to the public and used for all faiths only 5,000 have eleven bells, or more. Of these churches 16,000 are in the Church of England buildings and 12,500 of these are listed by Historic England.

We have a commonwealth war cemetery and a memorial in the grounds of St. Andrew's. In the aftermath of the 1909 West Stanley colliery disaster, 118 of the 168 victims were buried in mass graves at the Council Cemetery adjacent to St. Andrew's Graveyard.

Diocesan priorities

OUR CHURCH IN ACTION

With our vision statement in mind, we are moving forward to effectively engage with our diocesan priorities. We are fortunate to have a warm and welcoming congregation and a strong and committed PCC.

Energising Growth



We have two regular Eucharist services each week. There is a sung Eucharist on Sundays at 10am and a 10am Eucharist on Thursdays. Coffee is available after each of these services giving an opportunity to spend time together.

NB The timing of the Sunday Eucharist will be changing in the near future to 10.30am to enable Sunday morning services in both churches in the new Benefice.

All Eucharist services and readings follow the Common Worship format and Lectionary.

Vestments are worn and crucifer and servers are robed.

We have a committed group of lay people who lead morning praise services and assist with the administration of the chalice and readings. These people are key to the running of the church.

St. Andrew's has an organist each Sunday, except for the last Sunday of the month due to a prior long-term commitment. On that Sunday we have recorded music to facilitate hymn singing.

Throughout the year we have a number of special services during festival times, and we also hold town and community services e.g.:

Remembrance Day service at the war memorial at St Andrew's Church, including the laying of wreaths.



Local school Christmas Carol services.

Mayoral Town Carol Service which we host jointly with the Council and is supported by Pact House (a community hub) who supply the food and the Co-op Funeral Service, who supply the carol sheets.

There are a couple of groups meeting regularly each week in St. Andrew's Church. Mothers Union on Monday afternoons and the Friendship Group on Thursday mornings.

We have actively reached out to asylum seekers in our area as part of our mission, creating the Friendship Group to provide support, companionship, and advice, via Communities Together Durham, a Diocesan organisation. This has proved to be very successful, and we are reaching a number of asylum seekers who attend regularly, many of whom also attend our Sunday morning worship.

On the second Sunday of each month, we hold our Messy Church session between 1pm and 3pm.

We are setting up a monthly prayer group.

We are hosting the 2025 Confirmation Classes and also the Confirmation Service.

We are continuing to profile our church and its events through our Facebook page and on A Church Near You.



We have recently hosted a Community Photography Exhibition, featuring works by the local community. In conjunction with the exhibition a light installation 'Traveling Tales' was displayed in the church grounds, featuring over 600 images created by schools, community groups and drop in sessions.



Caring for God's Creation

Currently our financial situation is such that we are only able to take small steps towards the end goal of Net Zero. We are looking at the possibility of using other forms of green energy and whether there may be funding available. Within the church building itself we are encouraging recycling, reducing heating times wherever possible and employing general 'good housekeeping' practises.

Challenging Poverty

With large sections of our community living in areas of high deprivation we recognise the ever increasing need to find new ways to challenge poverty.

We have a collection area for donations to our local Food Banks, which we make regularly.

We have a supportive and well attended Friendship Group for asylum seekers run by church volunteers.

Mothers' Union continues to work supporting a local Women's Refuge and regularly makes and supplies both Homeless and Hospital packs.

Other charities supported are The Children's Society and Marie Curie, plus we collect for emergency and relief appeals.

We recognise the need to support the lonely and isolated in our community and look to how we will be able to achieve this as we move forward.

Children, Youth and Young adults

We have an active and enthusiastic Messy Church group which meets each month and this has steadily grown, with a regular attendance of between 15 and 20 children and their parents/adults.

Both children and adults from our church and our community are benefiting from the friendship and skill sharing that this group creates. Their enthusiasm and willingness to

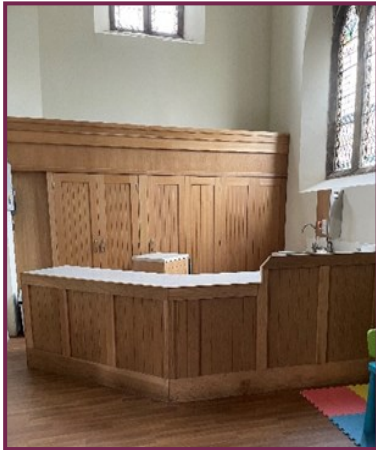




support St. Andrew's led to a magnificent £612.50 being raised by the children last year with a sponsored walk.

In terms of youth and young adults we are not as successful. We are hopeful that any mission investment and advice available would enable us to reach and engage this group.

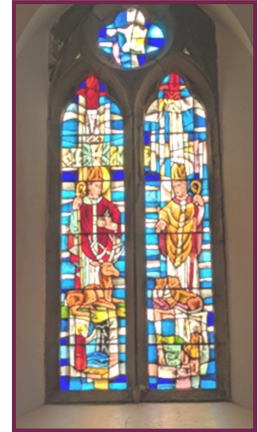
Buildings



We are fortunate that, in past years, through fundraising, giving and a substantial legacy we have been able to maintain and keep St. Andrew's Church at a good standard, inside and out.

This included the refurbishment of the rear interior of the church to include a social space with a well planned kitchen area which we use for fundraising and social events and is also available for hire to small groups.

The social area comfortably seats, with tables, forty people, and we have also used the main body of the church for larger music fundraising events. We have one toilet with baby changing facilities.



Our disabled access is good, including ramps within the church, an external sloping access from the main gates to the church porch and railings either side of outer steps leading from a side entrance.

We have a responsibility towards the former St. Stephen's Church, now closed. It is leased out to St. Stephen's Centre Community Organisation on a long term basis.

We are also responsible for the maintenance of Craghead Churchyard, with its few remaining plots, although the church itself has been closed for a number of years.

Finance

We have a generous but small congregation and have successfully met the requested Guided Pledge up until 2022. From 2023 we have unfortunately been unable to increase our giving and fundraising sufficiently to continue to meet the full Guided Pledge. In 2025 we will maintain the figure paid last year but are unable to increase.

At present we have a shortfall each month but response to renewed fundraising efforts is good and we will continue to work to improve this situation.

Current details of our accounts are as follows:

Current account £25,389.87.

Two deposit accounts (with small daily interest) which combined hold £14,903.42.

Two Trust Funds, detailed below. These are held by The Church of England bankers CCLA. These have all been restricted funds, however The Diocese has recently advised that The St. Andrew's Trust should no longer be shown as a restricted fund.

Peace Trust £10,050

St. Andrew's Trust £32,505

This has been used in recent years for any required transferred funds.

The most recent statement of accounts is attached (see appendix 2)

Fundraising

We hold regular fundraising events which contribute towards our finances. These include a regular Christmas Fayre, with lunches, and music evenings with a local band and games nights, both of which include a light buffet. We also hold occasional coffee mornings.

St. Andrew's Messy Church held a sponsored walk in 2024 and a further sponsored event is planned for July.

An Easter Wreath workshop has taken place in April.

Governance

We have two churchwardens, who have been invaluable during this time of interregnum, working tirelessly to maintain unity and trust in the absence of a vicar.

We have a strong, committed, and effective PCC who are responsible for ensuring our church is functioning in a responsible, ethical, and safe manner that aligns with theological beliefs. Within this we have an elected Secretary, Treasurer, Safeguarding Officer, Health, and Safety Officer and two Deanery representatives.

Collectively, our PCC manages day to day functions, maintains consistency, manages resources effectively and also promotes accountability within leadership. They are responsible for promoting and directing our mission aspirations.

The PCC meets monthly (with an August break), and minutes are kept from each meeting.

All DBS checks and training are kept up to date.

The PCC, together with a small group of volunteers, keep our church clean, maintain paths in winter and ensures any needs are met.

St. Andrew's has four lay people who lead morning praise, two lay people to assist with the chalice and five members of the congregation who comprise the reading rota.

Office Hour is held monthly for baptism and wedding bookings and general queries. In addition, our Church Wardens are available for contact by telephone on a daily basis.

Occasional Offices



Baptism At the present time we hold baptisms on the 3rd Sunday of each month. In 2024 we were fully booked with a total of twenty-one baptisms (3 under 1 year, fifteen between the ages of 1-4, one between 5 and 10 years and two adults) and we have already had two baptisms this year and are booked up to October 2025. We have a group of volunteers who assist at all baptisms to welcome new families into the Christian family.

Weddings In 2024 St. Andrew's Church had one wedding and this year we have had one in the early months, with another booked in. The position, interior and grounds of our church makes it a popular choice for those keen to commit to their lives together with the blessing of God.

Funerals We held sixteen funerals in church and six funerals at a crematorium in 2024, with one burial of ashes. So far this year we have held seven funerals.

The church graveyard is now closed and under the jurisdiction of the local council, but we have a Garden of Remembrance for the interring of ashes. The Garden of Remembrance has been maintained by a volunteer gardener who has given her services free of charge. The local cemetery is close by and Mountsett Crematorium is within four miles of our church.

All occasional offices are attended by two church volunteers and visiting priests do the administration.



St Margaret of Antioch Parish Profile 2025



Church, Mission and Worship

We are a village Church serving the people of Tanfield Parish, Tanfield Parish has existed for over 1,000 years and is made up of the villages of Tanfield, Tantobie and Tanfield Lea, along with nine other smaller communities, it is continuing to grow with new houses being built. We are a member of the Deanery of Lanchester.

We have a faithful core of committed church members and attract many more people from the community to seasonal services and special events.

The congregation describe themselves as warm and welcoming who work together for the good of our Church and each other. Our mission is to be a place and a community through which God's love shines, sharing and growing the Christian faith and glory.

In December 2024 we have joined to a new Benefice with St Andrew's Church, Stanley and South Moor Parish, from 2000 to 2016 we had a shared ministry with Stanley Parish and we worked well together, we are very much looking forward to working with them once again, sharing and combining our missions.

From 2016 to December 2024 we were in a Benefice with Burnopfield and Dipton and have been without a vicar since 2021.

Regular Worship



Sung Eucharist is celebrated every Sunday morning at 9.30am*, seasonal booklets, prepared from Common Worship are used for the service and the Book of Common Prayer for morning worship. Our Church bells call to worship and the hymns are led by our dedicated organist. Following on from the service light refreshments are served in Church.

At present we have retired Clergy who lead the services, when they are not available one of our Churchwardens lead the first part of the service, and we have a group of people who are happy to perform readings, three members have their 'Wings for Worship'. We would like to continue to play our part in the life of the Church when the new incumbent joins us.

We seek to use the major church festivals of Christmas and Easter as opportunities for witness and serve in the wider community. At Christmas, in addition to our normal church services we hold a Carol Service and also a service for all the children and their parents/carers from our local primary school, a fantastic event for the local children and filling the church with 200+ people.

The priest wears vestments for all services.

Each Tuesday morning the Church is open for prayer and quiet reflection.

Once a month on a Tuesday a 'Mini Songs of Praise' is held.

Our services are advertised on social media on our Facebook page and on the website 'A Church Near You'.

*St Margaret's and St Andrew's PCCs have discussed and appreciate the need for service times to change to accommodate a vicar for both services on a Sunday. The discussion was to move our time from 9.30am to 9am if this was suitable to the new incumbent.

Electoral Roll

We are committed to expanding our missional reach. At present, in 2025, we have 63 people on our electoral roll. Currently approximately half the attendance on Sundays are under 60 years old in contrast to the national trend.

Occasional Offices



Baptism – Not just children and infants we welcome all, including active church members and those who are not usual attenders. In 2024 we held 8 baptisms.

Weddings – We love to have a wedding at St Margaret's, such a special occasion to be held and blessed at Church, we would encourage couples to attend church during the time of preparation. In 2024 we had 2 marriage services and have 2 booked for 2025.

Funerals - This is an important part of our ministry. We offer prayer and support to families who have lost loved ones. We have established a Garden of Remembrance within the church grounds, where following a short informal service, the ashes of loved-ones can be interred. In 2024 we had 1 funeral held at Church then to Mountsett crematorium (only 1.5 miles away), 4 services at Mountsett crematorium and 1 ashes interred.

Social/Community Outreach

We have strong links with the local community and are keen to build relationships with people who do not currently come to church. We hold many social events mainly in our church hall, which also raise funds through raffles etc. These events attract church members and those who are not regular church goers, we feel these interactions provide an important moment of contact with the Church.

Some of the social events we hold are:

Monthly coffee mornings, Fortnightly craft sessions, Monthly bingo nights, Monthly Sunday Lunch, Social Evenings two or three times a year, Summer and Autumn Fairs, Afternoon Tea, Durham Miners Banners, Christmas Tree Festival, Book Club.

We are always thinking of ways to improve and introduce new events.

We advertise these events on social media on our Facebook page.

We have a good relationship and rapport with our local councillors in our parish as well as the Town council.

Our local primary school in Tanfield Lea has their Easter and Christmas Carol Service at St Margaret's, they recently have had a new Head Teacher and we would love to extend the Church's mission and perform more assemblies within the school.

St Margaret's also has links with the local Tanfield Lea Partnership, The Tommy Armstrong (Pitman's Poet) Association and we collect food for the Co Durham Foodbank in Stanley.



Leadership and Governance

During the interregnum church members have worked closely with and been supported by retired members of the clergy.

There are five lay people who assist with the chalice, one who does intercessions and twelve who are on a rota for the readings.

St Margaret's PCC meet every two months, where we will discuss among other things the four diocesan priorities: **Energising Growth, Children and Youth and Young Adults**—constantly thinking of new ideas and events and how to improve on existing events to introduce people and youth onto the Church.

Challenging Poverty—promoting our collections for the foodbank, signposting and creating new events.

Caring for God's creation—we discuss repairs and source goods with an environmental awareness.

All PCC posts are filled: two Churchwardens, Secretary, Treasurer, Deanery Synod representatives, Health and Safety Officer and Safeguarding Officer. Within these posts we hold a varied wealth of experience from employments and personal experiences. Minutes are kept of all meetings.

Training, DBS checks, policies and health and safety are kept up to date.

We have a team of dedicated volunteers who clean the church and church hall, tend to plants in the garden, maintain paths in winter and report any larger jobs that need attending to.

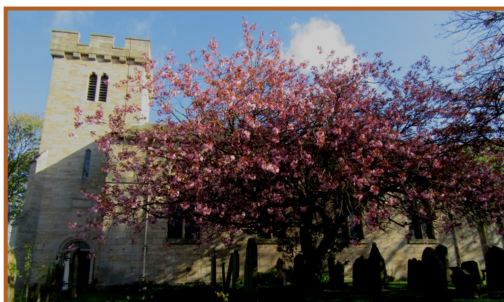
Church and Hall Buildings

St Margaret's of Antioch is a Grade II Listed Building, a focal point in the centre of Tanfield Village, situated approximately 10 miles north of Durham City, it was built in 1749. It can accommodate about 200 people with an additional 32 in the choir stalls. It has a large organ and a bell tower containing 10 bells.

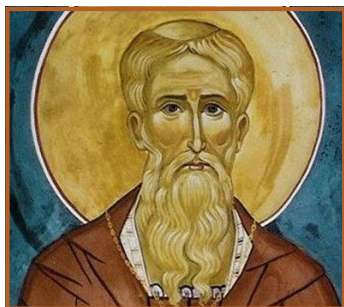
The church is in generally good order, we have plans to make repairs to the tower roof and main roof in 2025, we have restricted funds to repair one of our windows, some painting to be carried out and the heating maintenance.

The interior of St Margaret's is a wonder of memorial stones, windows and carvings - the legacy of Tanfield's link with the nearby Beamish Estate. There is a churchyard adjacent to the church with many interesting headstones including James Joicey a Newcastle coal owner. There is also a cemetery with Commonwealth War Graves along with Tommy Armstrong's (The Pitman's Poet) grave. Both cemeteries are now closed and have been adopted by Durham County Council.

Tanfield is part of the Heritage Trail of Northern Saints after they gave refuge to the body of St Cuthbert.



History of St Margaret's Church



In approx. 875AD the Lindisfarne monks began their journey from Holy Island, with the body of St Cuthbert, following constant attacks by the Vikings, they then made their way south to Chester-le-Street. They stayed for long periods at safe havens. It is not chronicled just when they moved to Tanfield, but it is believed to be the few years leading up to 900AD, an ideal place with surrounding hills and running water, they sought and were given refuge hiding from the Danes and hiding St Cuthbert's body. In gratitude the monks erected a Chapel at Ease in Tanfield which opened in 900AD. For many years monks travelled from Chester-le-Street to Tanfield to give communion, their arrival was sounded with the ringing of a handbell.

A second church on the same site was erected in 1050AD, but in 1138AD members of the army of King Arthur of Scotland travelled through Tanfield on their way to battle in Northallerton, they killed many Tanfield villagers and badly damaged the church. This church then suffered terribly at the hands of the Curate of Tanfield, who in 1736 had a coal pit sunk in the church yard, and a drift mine dug under the church itself. He hoped to pocket the proceeds from his mine. But the mining activities caused great subsidence to the church and it was demolished. The then Bishop of Durham ordered the vicar to build a new church with his profits from the coal. The third church on the same site was constructed, and completed in 1749, the present day St Margaret's.

The windows in this third (existing) church had round tops, but these were replaced in 1877 with the current windows. The 18th Century church consisted of a nave, aisles, chancel and had a gallery in the west wall for colliery workmen. The door to the church was originally in the south wall, but when John Eden erected the tower in 1878, the gallery was removed, and the door was incorporated into the south wall of the new tower.

St Margaret's Church Bells

The bells are the church's audible connection to the community and surrounding area.

There are 10 bells housed in the Victorian tower. Up until 2019 there were 8 bells, but the old frame and fittings were worn out. After a short fund-raising campaign, the bells and fittings were restored and replaced. Two new light bells were gifted giving us a magnificent ring of 10. £125,000 was raised and the new ring should continue to ring without incurring any costs for a very long time.



Our practice nights have swelled from other nearby churches joining us to ring together. We regularly receive visitors to ring the bells from all over the country. The local bell ringing association usually hold their teaching workshops at Tanfield because the bells are so easy and pleasing to ring.

It is common to have churches with 6 or 8 bells. There are over 3000 churches with 6 or more bells, but less than 300 with 10 bells which is a great draw.

Two of our young ringers represented the local association band in the National Youth competition in 2023 and 2024 and won in both categories out of 30 plus teams. We are very proud of them.

The dedicated and enthusiastic volunteer bell ringers ring for every service and undertake ringing for weddings and funerals. They paid solemn tribute to the late Queen and rang the first peal on the new bells for the Coronation of Charles III.



St Margaret's Hall



The Church Hall opposite to the church was built in 1968 and had a total refurbishment in 2011 to include disabled facilities including a disabled toilet and a baby changing area. There is a full kitchen with a large range of amenities. The Hall is used on a regular basis by the church for events and fundraising. It can be hired by members of the community for baptism celebrations, weddings, funeral wakes, parties etc and can also be hired by community groups and classes as well as local elections.

Finance

Following ACAT guidelines, finances are well controlled and regularly presented in accurate format to the appropriate authorities on time. In addition, monthly reports are presented to the PCC so any issues can be promptly dealt with.

The day to day operation of the church is funded mostly from regular giving but we do need to fundraise too. Well supported events such coffee mornings and fairs generate essential additional funds to maintain and improve this historic church building whilst providing valuable opportunities for outreach.

Over the last two years we have been able to ensure that our commitment to running and maintaining the church and hall have been met, with the exception of paying the Parish Share in full (the Parish has for many years fulfilled its commitment to the Parish Share whilst carrying out numerous restoration works and the updating of the Parish Hall), this was due to some challenges with illness and our bank closing all community accounts, including ours. Once the accounts were back in order and some savings had been made, along with claiming a backlog of Gift Aid we will meet our Actual Pledge of Parish Share in 2025. The new financial structure has helped us to realistically re-assess our giving.

A restoration fund is held as well as the general church fund, the restoration fund has approx. £18,000 at present, and have restricted funds of £2,750 for the roof, £6,000 for a window and £1,000 for painting. We also have a designated fund for the church hall where we can monitor the income and expenditure for the hall, the hall at present covers its own costs and any surplus can be added back to the general church fund.

We have a reserves policy in a designated fund, this should be maintained at a level of six months costs, it is being maintained.

Finance is always an on the agenda at our PCC meeting and we are all aware of our responsibilities.

Tanfield parish retains control over its own finances.

The most recent statement of accounts is attached (see appendix 3)

Appendix 1

Housing – St. Andrew's Rectory

Description:

St. Andrew's Rectory is within a 2/3minute walking/driving distance from St. Andrew's church and St. Margaret's is approximately two miles away.

The Rectory is set on a large plot within the grounds of St. Andrew's nursing home (former vicarage site), beside St. Andrew's Church. The rectory is a modern four-bedroom house with an attached garage. It is in excellent order throughout.



Downstairs: Leading off the entrance hall is a toilet. There is also a study. These can be separated from the main living area if required. Downstairs there is sufficient storage space, a spacious living room with patio door to the garden, a large dining room and a kitchen with separate utility room and another door leading to the garden.

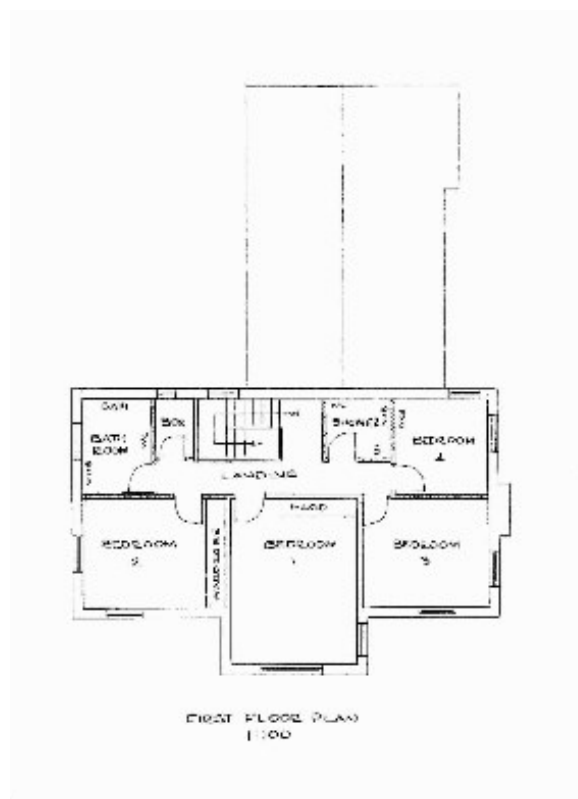
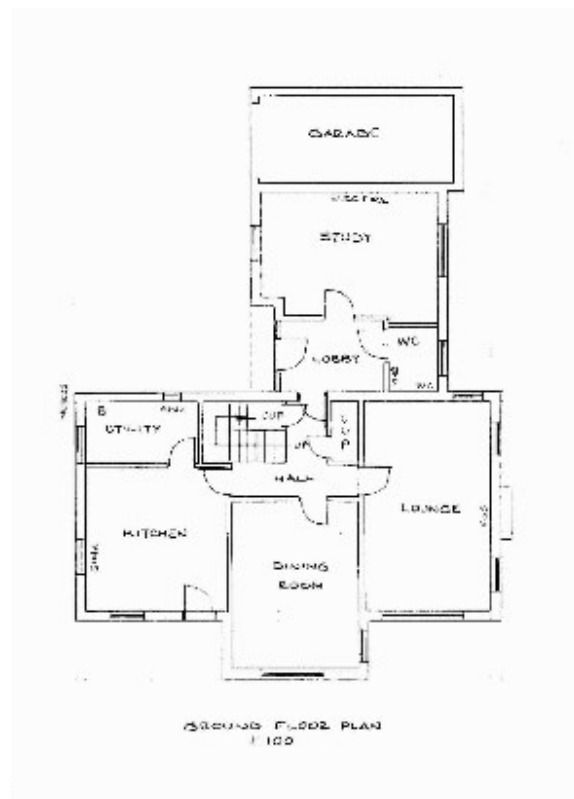
Upstairs: There are four bedrooms, a family bathroom, a shower/w.c. room and a large airing cupboard.

Externally: There is a well-kept garden to two sides of the property. The garden has mature trees and is set mostly to lawn. There is a large block paved area to the front of the house and garage.

Although Stanley is an area of high deprivation, with challenges such as high unemployment & a declining town centre, there is a strong sense of community.

The town is surrounded by fields and woodland with good transport links to both Newcastle and Durham.

Floor plans:



Appendix 2

St Andrew's Financial Statement

PAROCHIAL CHURCH COUNCIL OF THE PARISH OF STANLEY AND SOUTH MOOR

Charity No. 1131369

Statement of Financial Activities for the Year Ended 31st December 2024

Balance Sheet at 31 December 2024

<u>Current Assets:</u>	<u>Note</u>	<u>2024</u>	<u>2023</u>
Central Board of Finance	4a	52170	104767
Cash at Bank and in hand	4a	48640	28942
Debtors	4b	0	0
		<u>100810</u>	<u>133709</u>
<u>Creditors</u>	5		
Amount due within 1 year		0	0
Net Current Assets		100810	133709
Total Assets		<u>100810</u>	<u>133709</u>
<u>Funds</u>	6		
Unrestricted	6a	84897	120391
Restricted	6b	15914	13318
	1	<u>100810</u>	<u>133709</u>

The Financial Statements were approved by the Parochial Church Council on :-

DATE :

	<u>Chair</u>	<u>Churchwarden</u>	<u>Churchwarden</u>
Signed	Kathryn J. Robson	R. B. Blen	pp. M. H. H. H.
Date	1/5/25	1/5/25	1/5/25

Appendix 3

St Margaret's Financial Statement 2024

Parochial Church Council of St Margaret's Tanfield
Financial statements for the year ended 31 December 2024
Statement of Assets & Liabilities

Page 2

	Note	Unrestricted Funds £	Restricted Funds £	TOTAL 2024 £	TOTAL 2023 £
Cash funds					
Bank current account		28,630	9,750	38,380	9,332
Deposit funds					12,627
		28,630	9,750	38,380	21,959
Investments assets					
Investment Fund Interest	2	648	-	648	727
Liabilities					
			-	-	

NOTES

- The financial statements have been prepared in accordance with the Church Accounting Regulations 2011 using the Receipts and Payments basis.
- Annual Trust Fund 18/4 Gethsemane interest balance at end 2024 £2671.46 - interest to be used for ecclesiastical purposes.
- The movement in designated and restricted funds during the year:

	Bal B/fwd	Receipts	Payments	Transfers	Bal c/fwd
Restricted					
Restoration	9,750		-	-	9,750
	9,750		-	-	9,750
Designated					
Church Hall Fund	564	4,136	1,748		2,953
Restoration	3,627	5,100	-		8,727
Flower Fund	-	42			42
Reserves Fund	-	6,000			6,000
General Church Fund	8,768	17,017	14,877	-	10,908

Thank you for taking the time to read our Parish Profile we hope it has been a good insight into our Benefice and living in our area.