



PARISH PROFILES 2025

ST JOHN'S
BIRTLEY

ST ANDREW'S
LAMESLEY

CONTENTS

Introduction from Bishop Sarah **3.**

Welcome from the Archdeacon **4.**

Summary **5.**

About our new Priest in Charge **6.**

ST JOHN'S BIRTLEY **7.**

- Mission and Social Action **8.**
- Ministry **10.**
- Worship **11.**
- Our Buildings **12.**
- Finances **14.**
- The Parish **15.**
- Looking to the Future **17.**

ST ANDREW'S LAMESLEY **18.**

- The Parish **19.**
- Our Buildings **20.**
- Worship **22.**
- Ministry **23.**
- Charities and Mission **24.**
- Finances **26.**
- Looking to the Future **27.**

The Vicarage **28.**

Details **32.**



INTRODUCTION FROM BISHOP SARAH

This is an exciting time to be exploring joining the Diocesan family in Durham Diocese. We are on the cusp of a fresh chapter in our mission and ministry together. We are currently discerning with the National Church who will be the next Bishop of Durham, called to lead as we seek to make real our vision for the transformation we so desire across our Diocese. We are deeply encouraged by the award last year of significant national funding, demonstrating real confidence in our vision.

Our strategy for transformation and missional growth ('Called to Fruitfulness') is an opportunity and invitation for each of our parishes to step out in faith together, responding practically to our priorities to **Challenge Poverty, Energise Growth, Care for God's Creation** and **Engage with Children, Youth and Young Adults**. Making this a reality it will look different in every community. In some places it will come about in collaboration with others. Nobody is expected to do everything immediately or alone, but we are all invited and expected to find ways to respond relevantly.

In Birtley and Lamesley this feels particularly relevant. We sense the importance of **Energising Growth** – in discipleship and in the number of people served by and engaging in the life of our churches. We also sense the importance of **Challenging Poverty, Engaging with Children and Young People** and **Caring for God's Creation** in an area with lots of families, with some significant pockets of poverty, and with deeply rooted communities that still look to, and are open to, the local church.

In praying for a new Priest we are looking for someone excited by and wanting to be part of this vision and new future. Together we pray hopefully

*Loving God, guiding the people of Durham Diocese faithfully through the years:
We thank you for saints who have marked our path,
young and old, known and unknown, from all places and in all walks of life.
Help us to find your way in our generation:
transformed by your truth, sharing your life, blessing our communities.
Through Jesus Christ our Lord,
Amen*

We look forward to meeting together and sharing in this with you.

In Christ,

+Sarah
Bishop of Jarrow
Acting Bishop of Durham



WELCOME FROM THE ARCHDEACON

This is an exciting time for the parishes who have worked hard in the vacancy and formed a new benefice, which makes geographical and missional sense. During their vacancies, the PCCs and congregations have formed good relationships and are eager to work together with their new priest for the growth of the Kingdom of God in the area.

The parishes have provided information about themselves separately to give a good overview, but wish the document to be seen as a whole, recognising their desire to work together. One result of this collaborative working is renewed patterns of Sunday worship so that the priest will be able to be at both churches each week.

This is an exciting role of vision forming, collaborative working and mission opportunities and if you wish to have a conversation about it then please do not hesitate to contact either myself or the Area Dean.

Please be assured of my prayers if you are considering whether you are called to this post.

With every blessing

Libby Wilkinson
Archdeacon of Durham



SUMMARY

We are looking forward to welcoming and supporting a new priest in charge who will work with the parishes of St John's Birtley and St Andrew's Lamesley aiming to fulfil the Diocesan priorities of **Energising Growth, Caring for God's Creation, Engaging with Children, Youth, and Young Adults** and **Challenging Poverty**.

Both churches have **dedicated PCCs with good skill sets** who, along with our congregations remain committed to being a Christian witness in our parishes, and are open to change to enable our churches to grow and flourish.

Although Birtley and Lamesley sharing a Priest in Charge is a new arrangement for us we are **very keen to work together for the mutual thriving** of our parishes. We have a lot of similarities. We both have a **desire to grow in mission** and see people come to Christ, we both realise the importance of **reaching children** for our shared future, and we both have an **enthusiasm for music** in our worshipping life.

We look forward to meeting you and working together to make the love of Christ known to everyone in our parishes.



OUR PRIEST IN CHARGE WILL BE...

A committed priest, a shepherd, with **experience of church growth, change** and **mission, enabling** and supporting the ministry of all people, young and old.

A **prayerful** priest who will help our churches **identify** and **prioritise their core mission** and the opportunities there are to help us **develop a strategic approach to mission**.

A **unifying** priest who will work alongside our PCCs and congregations, who is a **good communicator** with people of all backgrounds, both within our churches and the wider community.

A priest who recognises our traditions of worship and liturgical practice, whilst exploring with the PCCs and congregations, the introduction of **new forms of worship**, to enable us to **engage with the wider community**, and to **convey the relevance of Christ** in their lives.

A priest who will help us to **develop our ministry** with **Children and Young People**, so that they may learn of the love of Christ in their lives, and together we can all grow in discipleship and faith.

A person who is **generous** of spirit, **sociable** and has a **sense of humour**.

Most importantly a priest who with us will **discern God's vision** for what He calls us to be and do.



IS
THIS
YOU?



WELCOME TO THE PARISH OF ST JOHN'S BIRTLEY

St John's is a church with a long-standing commitment to serve a growing parish and seeks a priest who can **help** in **refreshing mission** and **growing the church**.

We anticipate **exciting times ahead** as we move towards sharing a full-time priest with St. Andrews, Lamesley, and step forward with faith in the future of St John's in Birtley.

We are excited to welcome a priest with **energy** and **enthusiasm**, who can nurture and **encourage our church in mission**, who will help us to **reestablish** previously **strong links** with **local schools** and help us to both **renew** and **strengthen** our **commitment** to the **young**, to **families**, and the whole parish.

We are looking and praying for a **missional priest** who will help us to **build** on our existing links and **develop our work** in this community in **social action**, **community engagement**, **prayer** and **evangelism**.

We are excited to meet you and look forward to working together to make the love of Christ known to everyone in our parish.

MISSION AND SOCIAL ACTION

OUR CHURCH AND OUR MISSIONAL VISION

St John's church has a **loyal, enthusiastic** and **dedicated team of volunteers**. Like many parishes, we have a large proportion of older members of the community. We are seeking **leadership to widen our mission, conveying the message of the Gospel to all** in the community, particularly the many **young people and families** in the parish, building on the **excellent relationships with local schools** established by the former incumbent.

SOCIAL ACTION

The Missions and Charities group provides **targeted giving endorsed by PCC**, which is reviewed every 3 years. We also support The **Gateshead Foodbank** with a collection of non-perishable food items. We are actively involved with Christian Aid Week, and in recent years this has involved a collection over two days at the local Morrison's Supermarket, with volunteers from all Birtley Churches, which gives an **opportunity for witness in the community**. Our Christingle service supports The Children's Society.



MISSION AND SOCIAL ACTION

CHILDREN, YOUTH, AND SCHOOLS

Locally, there are a **high number of young people, families and schools**, but they are not currently strongly represented in our church life. As such, **establishing a children's ministry is a priority** for us. Supporting local families has always been important to us as a church but feels especially important at this time and for the future of the church. **As a church we are eager to renew our engagement with and outreach to children, youth & families.**

Over many years local schools came to St John's church for school services and educational visits. We wholeheartedly welcome this engagement. We have a **positive and longstanding relationship with local schools**, particularly Ravensworth Terrace and Portobello Primary schools and Lord Lawson of Beamish Academy, giving us an important point of connection to local families. This is something we seek to reestablish with the support of a Parish Priest.

We welcomed children to join in our Calm & Bright event for Advent 2024, with crafts, signed singing, bubble prayers and a bible story. We would love to explore setting up more Messy Church style experiences for young children and their families in the future.



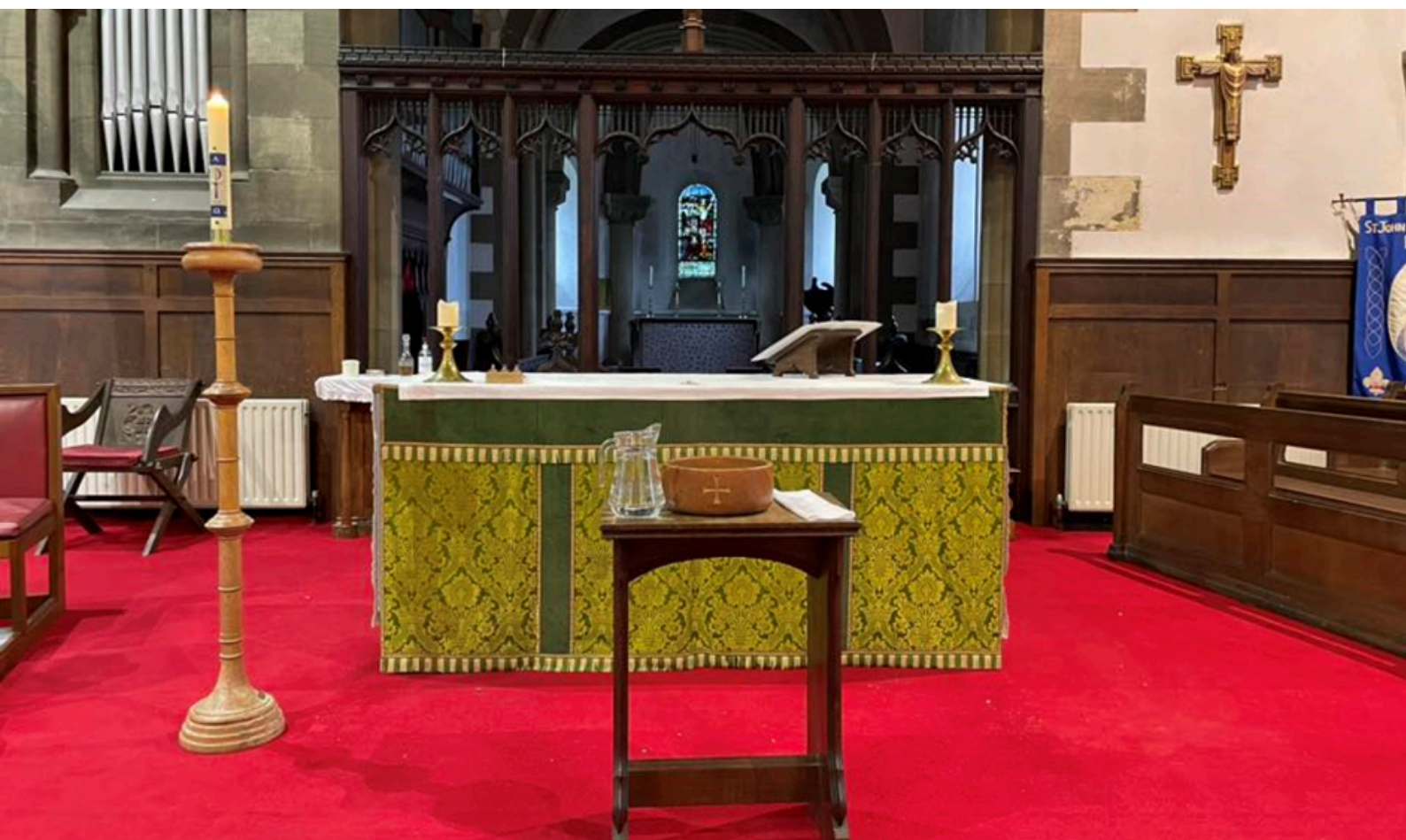
MINISTRY

St John's has been a **training parish** and enjoyed taking **Ordinands from Cranmer Hall**, and has **supported Reader Ministry** for many years. We are fortunate to currently have **one Lay Reader**. Funeral ministry is an integral part of St John's and our Lay Reader has covered most of these. The **commitment to bereaved families is excellent**, and the feedback attests to the fact that those families very much appreciate the services and the support they receive.

Lay ministry is also **a significant asset** to St John's, and this has included licensing for the administration of communion in church, providing home communion and pastoral support, including to the Residential Care Homes in the parish, and assisting with local hospital Chaplaincy.

The PCC and congregation seek to work with a priest who can help us **grow and develop our mission and ministry** within Birtley Parish.

Baptisms provide us a great opportunity to connect with local families. On average, we see **20-30 baptisms each year**. We have a dedicated Baptism Team who guide and welcome families. Baptisms are normally arranged to follow Sunday Morning Eucharist as required.



WORSHIP

Music is a real passion of ours and is central to worship in St John's. Historically, this was mixed, with both traditional Choir and Organ, and a contemporary Music Group. More recently the Music Group Leader and a small band (Piano/Guitar/Flute) have become responsible for providing the music at the main Sunday service, and at other services as required. The organ is currently not in full working order, and we do not have a resident organist at present.

The musical style is contemporary in the main, with responsorial music to accompany the Eucharistic settings, but draws on the traditional when appropriate, including the use of recordings of older hymns as required. We often incorporate the music of Taizé and from around the world. **Members of the congregation are encouraged to participate**, and we would be delighted to **attract a priest with an appreciation of music** who supports the ongoing ministry of music in St. John's.

Typically we have two services a week. We have a **Eucharist** on **Thursdays** at **10am** and on **Sundays** at 10am we have a **Sung Eucharist led by our Worship Group** (this **will be moving to 9.30am** to accommodate an 11am service at Lamesley). Both services are followed by refreshments and the opportunity for fellowship.

In addition to our weekly rhythm of worship, **we celebrate special seasonal services** such as Christingle and **Christmas** services, **Holy Week** and **Easter**, and provide a minister for the annual Service of Remembrance in the town.



OUR BUILDINGS

THE CHURCH

We recently celebrated 175 years of the building and recognise and **value its history and its ongoing ministry** within the parish and growing community.

Our Churchwardens and those who are able in the congregation maintain the fabric of the building.

Building of St John's started in 1848, and it opened for worship in December that year. It is a traditional building of the time in a Norman style and is a Grade II listed building. A vestry and an organ were added, and it was consecrated by the Bishop of Durham on August 9th, 1849.

There have been **various alterations across the years**. The building was re-roofed and rewired with other repairs and alterations over the 1990s. These included a re-ordering of the West end and tower to make the area more usable, with **an office in the clergy vestry** and **a small meeting place in the central tower area**.

The nave and altar crossing provide **an ideal open space with good acoustics**, and which has been used for performances, including visiting choirs and orchestras. **The stained glass in St John's has been recently restored**, some of which is by renowned glass artists.

The church building is **fully accessible, and the church has a hearing loop system installed**. There are toilet facilities in the church hall nearby, accessed via a recently resurfaced path within the church grounds.



OUR BUILDINGS

THE CHURCH HALL

The Church Hall **is a valuable asset** for our church **and is financially self-sufficient** with private hire and occasional income from the licensed bar. There is good accessibility from the small car parking area within the grounds. Recent renovations make it now **fully accessible** with regard to entrances and toilet facilities.

The Church Hall provides us with **a social space** for both church use **and for rental to outside organisations**. This currently includes an After-school club daily during term time, and groups as diverse as adult dance lessons, fitness sessions and a music society. The hall was recently **hired to accommodate a Warm Welcome Space**, run by Birtley BAME group with support from the Lottery fund and Gateshead Council.



PHOTOCARDS.AI

Entertainment plays a significant part in fundraising and in the social life of St. John's and the wider community. Over the years we have enjoyed Fun Days, BBQs and other events and have regular themed social evenings with food, entertainment, fun and a friendly welcome for all.

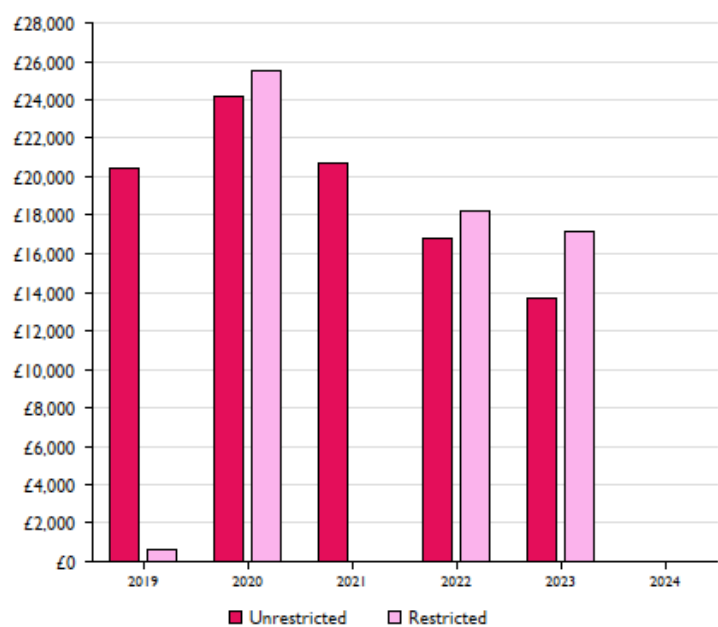
Our 175th Anniversary Family Fun Day was well attended and enjoyed by the wider community, and this has now been **reestablished as an annual summer event**.

FINANCES

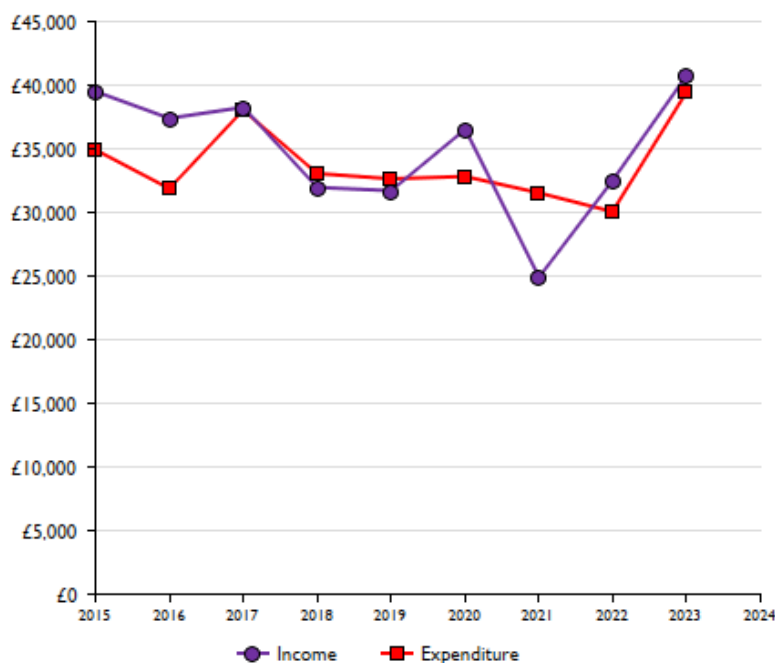
Finances are overseen by the Treasurer and year end statements are externally examined annually.

Our income has reduced over recent years with our biggest expenditure on gas, electricity and insurance.

We have a Building Fund which supports maintenance. It is likely that fundraising will be necessary for bigger projects. A digital card reader for giving has recently been introduced, and we hope this will help with collections at services such as Baptisms, in future.



RESERVES



INCOME/EXPENDITURE

£30-40K

AVERAGE INCOME/
EXPENDITURE

THE PARISH

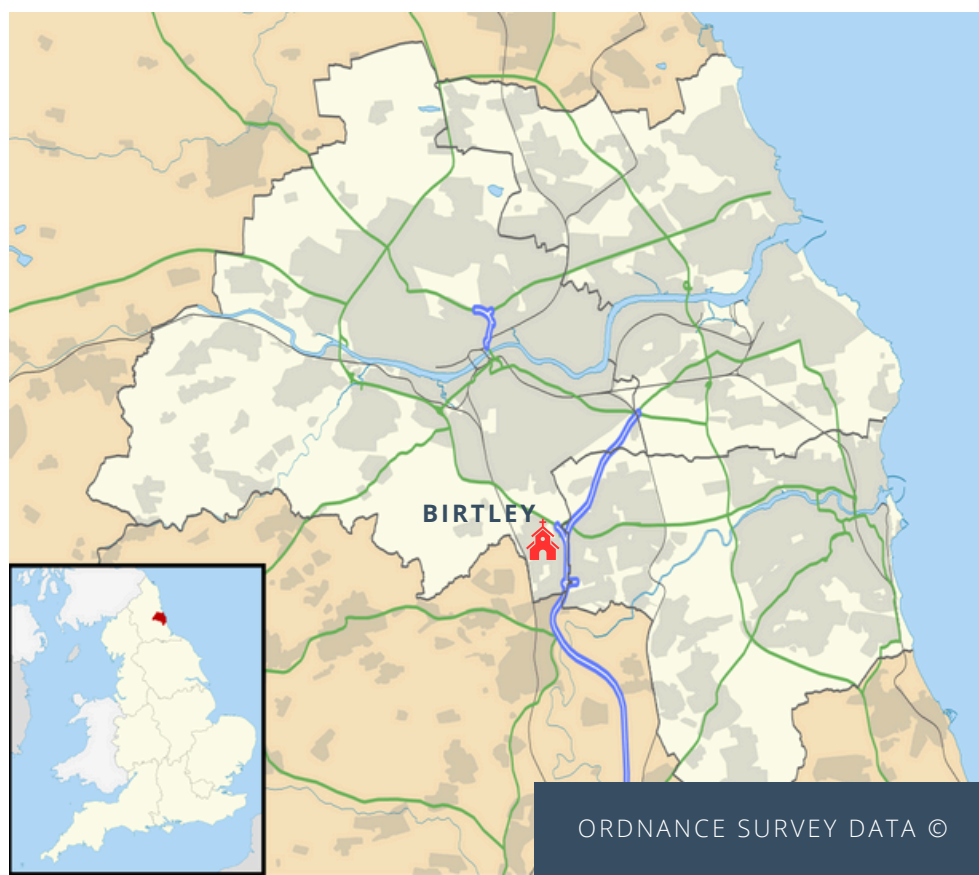
Situated in the Borough of Gateshead, **Birtley lies between the local cities of Newcastle** (5 miles north), **Sunderland** (9 miles east) **and Durham** (10 miles south). The town is nestled between the A1/A1(M) to the east and the main east coast railway line to the west. **Birtley is a moderate sized town** with a population of around 14,000. **There is a mix of housing** of varying ages and styles. Over recent years, there has been a lot of expansion of housing development, attracting families and young people.

Although Birtley was originally in Co Durham until 1974, when it transferred to Gateshead in the new Metropolitan Borough of Tyne and Wear, it kept the postal address of Co Durham, so may be listed as 'Co Durham' or 'Tyne and Wear' or 'Gateshead' (or any combination of the three). Birtley is also not to be confused with the small village called Birtley in Northumberland about 20 miles northwest of us, near Hexham!

There are **very good transport links** with easy access to the A1, and the A19 and **Birtley lies on a busy bus route**, providing convenient access to Gateshead and Newcastle to the north, and Durham to the South.

St John's Church is fairly centrally located on Birtley Lane, a road that runs 100 yards parallel to the main street. There are four Churches in Birtley: St John's (Anglican), St Joseph's (Roman Catholic), the Methodist Church and a Community Church. There is a large cemetery at the north of the town, with attached Chapel and Crematorium serving the surrounding district.

A well-known local landmark is Antony Gormley's famous **'Angel of the North'** sculpture. 'The Angel' overlooks the town from the north and can be seen from much of the town.



THE PARISH

Local amenities include a 9-hole golf course, a sports centre, library and medical centre, **4 primary schools and a large Comprehensive school**. There is a **large Community Aquatics Centre** which was **recently reopened by Prince William** and Olympic champion Adam Peaty following a successful Community Assets Transfer.

There is a small but busy shopping area running through Birtley's main street. This includes a fair-sized supermarket, general retail and services, plus restaurants (notably the renowned *Aioli* by Chris Finnigan) and take-away shops. There are also a few pubs and clubs in the town.

Other local highlights in easy reach include Beamish Open Air Museum, Team Valley Trading Estate, Gateshead Metro Shopping Centre, Gateshead & Newcastle Quayside (notably The Glasshouse International Centre for Music, The Baltic Arts Centre, and Millennium Bridge).

Details about the local schools can be found here

Our primary schools

Barley Mow Primary School <https://barleymowprimary.org/>

Portobello Primary School <https://portobelloprimary.eschools.co.uk/website>

Ravensworth Terrace Primary School <https://www.ravensworthterrace.com/>

Birtley East Primary School <https://birtleyeastprimary.org/>

Our secondary school

Lord Lawson of Beamish Academy <https://lordlawson.academy/>



REUTERS



AIOLI

LOOKING TO THE FUTURE

Looking to the future we have some challenges ahead of us plenty of exciting missional opportunities.

CHALLENGES

- Children and young people currently underrepresented in our congregation
- Smaller congregation size
- Building in need of some repairs

OPPORTUNITIES

- A real desire to grow in mission
- Heart for reaching children and young people
- Town context provides significant missional opportunities
- Positive and longstanding relationships with local schools
- Enthusiastic and supportive PCC and congregation

“ WE WANT TO SHARE THE MESSAGE OF THE GOSPEL WITH ALL IN OUR COMMUNITY ”





WELCOME TO THE PARISH OF ST ANDREW'S LAMESLEY

OUR MISSION STATEMENT

- 1.To worship God in a way that our services are inspiring and helpful.
- 2.To witness to the power of our faith in Christ in our daily life, at home, at work, and in the community, and by our willingness to learn and share.
- 3.To work with love and care to maintain and develop our parish church and its grounds in the beauty of holiness as the House of God.

THE PARISH

St Andrew's Church is situated in **a village** setting **on the outskirts of Gateshead**, and north of Durham cathedral, home to the shrines of the northern saints, Cuthbert, and Bede. The church is **less than half a mile from the A1** enabling easy access north and south. Opposite the church is Lamesley Pastures, a designated nature reserve of natural habitat for wildlife. The parish extends into urban areas with a mix of private and social housing, light industry, and part of an industrial estate on which there is a retail park.

In the parish we have **one secondary** and **two primary schools**, a **resource centre for young adults** with special needs and **five care homes**.

The Ravensworth Arms is all that remains of the old village of Lamesley, once known as Clubdon and stands on the site of what was once Clubdon Hall. It is also said to be the place where Lewis Carroll wrote some of his 'Alice' adventures. A little way north west of the village stands Ravensworth Castle, which is now in ruins, built during the twelfth century within the Ravensworth Estate.

The famous Angel of the North sculpture by Antony Gormley is in the parish, and stands on the site of the former Ravensworth Ann Pit. In 1757 a mining disaster killed sixteen men who are buried in the churchyard.

The Parish has a population of 6,459 at the 2021 census. It has an IMD ranking of 2710 out of 12,382 in terms of deprivation, meaning the parish is relatively deprived compared with other parishes in the country.



OUR BUILDINGS

THE CHURCH

We are proud of the rich history of our church that spans several centuries. **Worshippers and visitors appreciate the sacred space it offers.** It has medieval origins and can be traced back at least as far as the 13th century.

The current church was built in 1759 under the patronage and funding of the first Baron Ravensworth. It was extended and modified in the 19th century. The Priests' Name Board on the left of the Nave, shows the names of all the known priests who have ministered here back to the year 1409, several of whom were noteworthy.

The church is a **Grade 2 Listed** building on the National Heritage List for England. We see our church as a symbol of the **continuity of God's love through the centuries.** It is in **very good repair** with **no major internal or external works outstanding.** All essential work required from the Quinquennial Inspection in 2021 is complete. This included upgrading electrics and the installation of LED lighting. We have recently installed a new sound system.

St Andrew's Church is fortunate to have a fine, **well maintained Harrison and Harrison organ.** The organ is extremely versatile and has an excellent presence in the building



OUR BUILDINGS

THE CHURCH HALL

Our **warm and comfortable church hall**, a former school has charitable trust status with the PCC as trustees. It has two halls, **a well-equipped kitchen**, toilets and storage rooms. It is **managed by a hall committee**. External organisations and individuals hire the hall which **provides a steady income**. We recognise the **God given opportunity** we have of engaging more with those using our hall, especially with groups like ART venturers, who provide creative play sessions for toddlers and young children, and Lamesley Childcare who run fun filled childcare during school holidays to help parents balance work and family commitments.

The grounds to the rear of the hall consists of a gated carpark and spacious grassed area which is used for social events. The large carpark in front of the church is maintained by Gateshead Council.

Our **very active and successful Social Group** continues in their ministry to **provide community events** and **support church service gatherings** in the hall. These activities provide many aspects such as entertainment, shared experiences, company, maintain our profile as a welcoming church, celebrate special events and raise funds.

These **events** are **attended** by **church members**, friends of the church, people from other churches **and the wider community**. We are delighted that our local councillor and some of her staff join us at these events. A testament to us of **the impact we have on others by putting our faith into action**.



WORSHIP

Following fruitful dialogue with our friends at St John's our **Sunday service** has moved to **11am**. Since returning to weekly worship in 2025 St Andrew's has had an average Sunday attendance of 29. The first Sunday of each month is an **All Age Worship Service**. The **10.45 a.m. Wednesday midweek Eucharist service** focuses on **bible teaching**. Special services, such as our traditional **Christmas Carol Service**, Crib Service and **Easter Day celebration are well supported**. Our Crib Service in particular is joyful act of worship with great participation by **a large number of children creating holy chaos** using a variety of musical instruments loaned to us by the local school.

We have **a real passion for music**, which forms **the backbone of our corporate worship**. Our hymn singing leans mainly towards the traditional end of the scale using Hymns Old and New (green cover) supplemented by separate sheets when necessary. The **congregation make up an enthusiastic body of singers** who are happy to sing new hymns be they written in a traditional style or a more modern setting.

Our worship is enhanced by our current organist, Vincent Syson who has served the church for the past 18 years. A keen folk musician, Vincent has been known to break out his Northumbrian small pipes to augment worship.

The congregation is supportive and participate in reading lessons, leading intercessions, assisting at Holy Communion, and **every church member who is able is involved** in the life and ministry of the church. **We enjoy meeting parents and children preparing for baptism** when they attend worship for a Thanksgiving service. This puts them at ease of being in church and new relationships are formed.



MINISTRY

PASTORAL

Genuinely caring for one another is the bedrock of who we are as a church. We also have a Pastoral Group, co-ordinated by a member of the congregation which offers care to those who are unwell or just need a friend, and those unable to attend church remain part of our prayerful concern.

We recognise ordained ministry can be demanding and **we will support our priest in charge in every way we can.**

“MY POST-SURGERY CARE WAS LIKE BEING HELD IN A CUSHION OF LOVE”

ECUMENICAL

Our friends from **Mar Thoma Indian Church** continue to use our church and church hall on the 2nd Saturday of each month. Orthodox in its origin, since 1974 it has been in full communion with the Anglican Communion. **Since starting to worship here at St Andrew's it has continued to grow in numbers** and its people now regard St Andrew's as their home church. We look forward to **occasional joint services of worship** in the future.

There is one other centre of Christian worship in the parish, the United Reform Church in Low Fell.

Within Gateshead there is a strong church leaders group that crosses ecumenical boundaries.



CHARITIES AND MISSION

In 2023, we completed the **Partnership for Missional Church** process and were noted as **one of the outstanding churches in this area**. Although we have a mission statement, we now use the strap line, 'Glorifying God's Creation'.

We have **built on the links with the primary school** and have weekly volunteers listening to children reading. Year 6 children attend church for their annual Remembrance Service, and volunteers from St Andrew's participate in all the major religious services at the school. **The relationship with the school continues to grow and volunteers have become a useful resource to the school.**

We are committed to being a net zero carbon church and are steered by our ECO Church group. We were delighted to **gain the ECO Church Bronze Award in 2023** and are on the cusp of attaining Silver, with one area reaching gold status. **Our presence in the community continues to develop** with members of the community joining the dedicated team of litter pickers. During school holidays children join us, nurturing them in a practical way about caring for God's Creation. **Residents often comment how much this benefits the area.** As a result of this a good relationship has been established with our local councillor. We have been **awarded the Angel Award for our work in caring for the environment from Gateshead Council.**

We have a committed group of volunteers from the church and community to not only care for it, but to make it a place of peace and calm for visitors. Our volunteers work to make our graveyard environmentally friendly to wildlife as part of our commitment to being an ECO church, and as an extension of the nature reserve. Recently, Year 6 children from our primary school seeded our wild flower patch, and **children from Lamesley Childcare had a fabulous time building an amazing bug hotel.**



CHARITIES AND MISSION

The engineering firm Costain Group PLC have been widening the nearby A1 over the past year. They have given funding for gardening equipment and provided up to 8 staff per session to work alongside church and community volunteers in clearing 12-15 graves of many years of growth. This collaboration was a journey of discovery for us all. As their work on the A1 draws to close we said a heartfelt goodbye to their staff.

During these challenging times we continue to **support the work of Gateshead Foodbank** with donations of food, finances, and two volunteers giving their time. We also **support the Children's Society**.

We visit one of the care homes in the parish and have **established a relationship with adults with special needs and their carers from Marquisway Resource Centre**, situated on the Team Valley Trading Estate. We would like to **resume the lively services of worship they had at our church** for special occasions, supported by members of the congregation.

A **bi-monthly newsletter** which has a bible passage and short commentary **reaches more than 100 people**, church members, baptism families, and people in the community. We have a church Facebook page which is well used. Information is uploaded in a timely manner with information about services and events.

There are **new housing developments** in our parish which we see as **an opportunity for mission and growth**, recognising the need to **review our patterns and style of worship to achieve this**. We need to continue to reach out and meet people wherever they are, both young and old and will work with our priest in charge and support them in this important ministry and for this purpose **we are setting aside funds for mission and church growth**.



Gateshead
Foodbank
Together with Trussell



The
Children's
Society

making childhood better

FINANCES

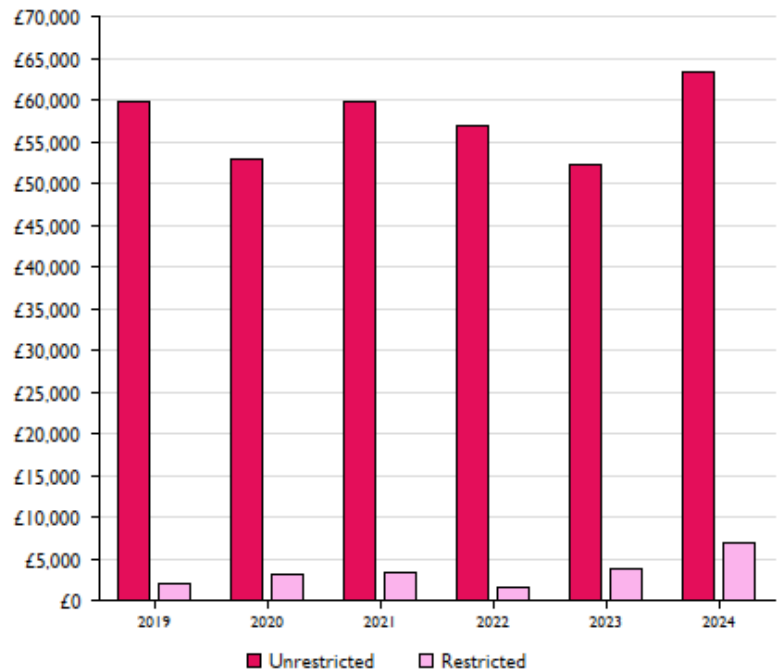
For two years following Covid, we were unable to meet the Parish Share Guided Pledge requested by the diocese. However, we did pay in full what we pledged. The PCC has committed to pay the full amount requested for 2025.

Capital expenditure does not cause any risk to our financial stability which is aided by legacy giving. Legacies were received £15,559 in 2024 and £44,394 in 2025 and a legacy of £8,017 was given to the Church Hall in 2025. The PCC has **agreed to commit some of this legacy to Mission and church growth.**

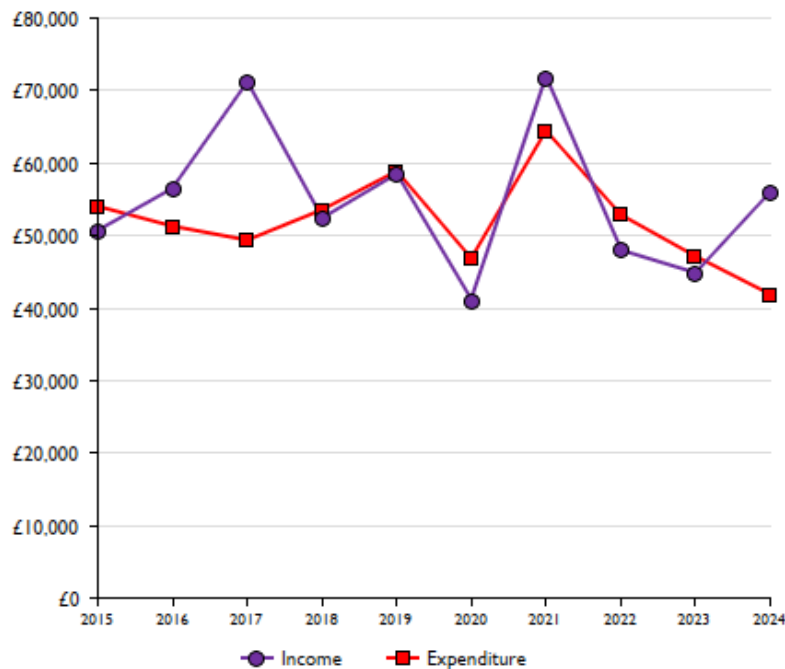
Most of the regular congregation's giving is made by standing order. We have a *CollecTin* card reader which is well used at baptism and other special services.

£63,408

UNRESTRICTED
RESERVES



RESERVES



INCOME/EXPENDITURE



LOOKING TO THE FUTURE

Looking to the future we will need some help negotiating the challenges ahead of us but we are hopeful about the opportunities in front of us.

CHALLENGES

- Children and young people currently underrepresented in our congregation
- Smaller congregation size

OPPORTUNITIES

- Outstanding PMC church with a desire to go further in mission
- Commitment from PCC to fund mission and church growth
- Enthusiasm for engaging all ages
- Supportive PCC and congregation
- Well maintained building
- Good community links



4 BED DETACHED

THE VICARAGE

The vicarage is a modern 4 bedroom detached house in the parish of Birtley, lying about a 15 minute walk from St John's and a 5 minute drive from St Andrew's Lamesley.

In addition to the kitchen and living room, the downstairs has an office, a toilet and a utility room.

Upstairs has 4 good-sized bedrooms, one of which is an ensuite, with an additional bathroom.

The vicarage is located in a quiet cul-de-sac with a garage and off street parking.



DO YOU FEEL
CALLED TO
JOIN US IN
SHARING THE
LOVE OF
CHRIST IN OUR
PARISHES?

DETAILS

To enquire about this post, please get in contact with

THE VEN. LIBBY WILKINSON

ARCHDEACON OF DURHAM

archdeacon.of.durham@durham.anglican.org



ST JOHN'S BIRTLEY



<https://www.achurchnearyou.com/church/13649/>



St John the Evangelist, Birtley Lane, Birtley, Co Durham, DH3 2PJ

ST ANDREW'S LAMESELY



<https://www.achurchnearyou.com/church/13670/>



<https://www.facebook.com/profile.php?id=100087369731279>



St Andrew's, Lamesley Road, Lamesley, Gateshead, NE11 0EU